



350 Bay Street Toronto, Ontario

Property Characteristics

Building Class	B
Building Size	49,788 sf
Total # of Floors	14
Average Floor	4,149 sf
Year Built / Year Renovated	
Total Available	8,155 sf
Total % Available	16.38 %

Building Expenses 2008

Operating Costs	\$ 19.57
Realty Tax	
Other Costs	
Total Expenses	\$ 19.57

Floor	Suite	Available Area (sf)	Rate	Rate Type	Lease Type	Term	Occupancy Date	Suite Comments
9	900	4,112	\$20.00	Net	Lease	Open	Immediate	Full floor opportunities, direct elevator exposure
12	1200	4,043	\$20.00	Net	Lease	Open	Immediate	Full floor opportunities, direct elevator exposure

Location Southwest corner of Bay Street and Temperance Street

Parking Public parking in vicinity



366 Bay Street Toronto, Ontario

Property Characteristics

Building Class	B
Building Size	33,990 sf
Total # of Floors	12
Average Floor	3,090 sf
Year Built / Year Renovated	
Total Available	9,274 sf
Total % Available	27.28 %

Building Expenses 2008

Operating Costs	\$ 19.50
Realty Tax	
Other Costs	
Total Expenses	\$ 19.50

Floor	Suite	Available Area (sf)	Rate	Rate Type	Lease Type	Term	Occupancy Date	Suite Comments
6	600	3,092	\$19.50	Net	Lease	To 2012-02-02	Immediate	elevator exposure.
8	800	3,092	\$19.50	Net	Lease	Open	Immediate	Will build to suit. Will build to suite.
11	1100	3,090	\$19.50	Net	Sublease	To 2012-02-28	Immediate	Built out with four offices with windows, three internal offices, kitchen, photo-copy room, reception, and internal washroom.

Location West side of Bay Street, south of Richmond Street



Greenwin Square 365 Bloor Street E Toronto, Ontario

Property Characteristics

Building Class	C
Building Size	272,908 sf
Total # of Floors	20
Average Floor	15,162 sf
Year Built / Year Renovated	
Total Available	52,383 sf
Total % Available	19.19 %

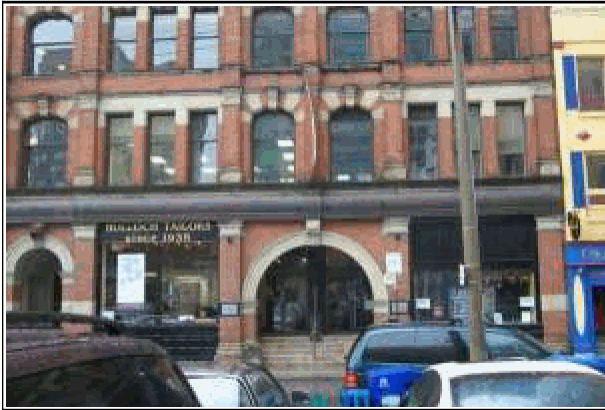
Building Expenses 2008

Operating Costs	\$ 17.73
Realty Tax	
Other Costs	
Total Expenses	\$ 17.73

Floor	Suite	Available Area (sf)	Rate	Rate Type	Lease Type	Term	Occupancy Date	Suite Comments
3	302	3,803	\$13.00	Net	Lease	Open	Immediate	
16	1600x	4,104	\$13.00	Net	Lease	Open	Immediate	

Location South side of Bloor Street East, East side of Mt Pleasant Road

Parking Ample underground parking at \$135.00 per stall per month.



Orton Building 41 Colborne Street, 41 - 43 Colborne Toronto, Ontario

Property Characteristics

Building Class	B
Building Size	10,827 sf
Total # of Floors	4
Average Floor	3,609 sf
Year Built / Year Renovated	
Total Available	3,426 sf
Total % Available	31.64 %

Building Expenses 2008

Operating Costs	\$ 13.25
Realty Tax	
Other Costs	
Total Expenses	\$ 12.50

Floor	Suite	Available Area (sf)	Rate	Rate Type	Lease Type	Term	Occupancy Date	Suite Comments
3	300	3,426	\$18.00	Net	Lease	Open	Jun 1, 2009	Full floor with elevator opening into space. Mix of offices and open area

Location South side of Colborne Street, west of Church Street

Parking Ample parking in immediate area.



30 Duncan Street Toronto, Ontario

Property Characteristics

Building Class	B
Building Size	67,392 sf
Total # of Floors	7
Average Floor	8,424 sf
Year Built / Year Renovated	
Total Available	13,700 sf
Total % Available	20.33 %

Building Expenses 2008

Operating Costs
Realty Tax
Other Costs
Total Expenses

Floor	Suite	Available Area (sf)	Rate	Rate Type	Lease Type	Term	Occupancy Date	Suite Comments
3	300	4,300	\$30.00	Semi-gross	Lease	Open	Jan 1, 2009	Vacancy will be completely "guttled", brand new and ready for Tenant fixturing Hydro is metered seperately

Location Richmond and Duncan

Parking Parking available in area



214 King Street W Toronto, Ontario

Property Characteristics

Building Class	A
Building Size	85,500 sf
Total # of Floors	6
Average Floor	17,100 sf
Year Built / Year Renovated	
Total Available	9,300 sf
Total % Available	10.88 %

Building Expenses 2008

Operating Costs	\$ 18.49
Realty Tax	
Other Costs	
Total Expenses	\$ 18.49

Floor	Suite	Available Area (sf)	Rate	Rate Type	Lease Type	Term	Occupancy Date	Suite Comments
2	214x	3,700	\$18.50	Net	Lease	Open	Immediate	Character brick & beam space.

Location North side of King Street, west of Simcoe Street

Parking Public Parking in vicinity