

FOR LEASE

Downtown East

KING GEORGE SQUARE

207 ADELAIDE STREET EAST • TORONTO, ONTARIO



DAVID MORETTI, VICE PRESIDENT*
416.643.3712
david.moretti@colliers.com

DANIEL HOLMES*
416.643.3463
daniel.holmes@colliers.com

ASHLEY WEDLOCK*
416.643.3477
ashley.wedlock@colliers.com

COLLIERS INTERNATIONAL
One Queen Street East, Suite 2200
Toronto, ON M5C 2Z2
Phone: 416.777.2200
Fax: 416.777.2277
www.colliers.com

*Sales Representative

LOCATION

Located on the south side of Adelaide, east of Jarvis.

AVAILABLE SPACE - (NON CONTIGUOUS)

~~4,139 square feet - Suite 300 - available immediately (30 days)~~ **LEASED**
1,347 square feet - Suite 302 - available July 1st, 2008
~~729 square feet - Suite 103 - available September 1, 2008~~ **LEASED**

NET RENTAL RATE

\$14.50 per square foot per annum

ADDITIONAL RENT

\$12.50 per square foot per annum (2008 estimate)

COMMENTS

SUITE 300:

- Exposed ceiling
- Hardwood floors
- Kitchenette
- Boardroom
- Lots of natural light

SUITE 302:

- Exposed ceiling
- Kitchenette
- Lots of natural light
- Built-in storage closets

On-site, underground parking

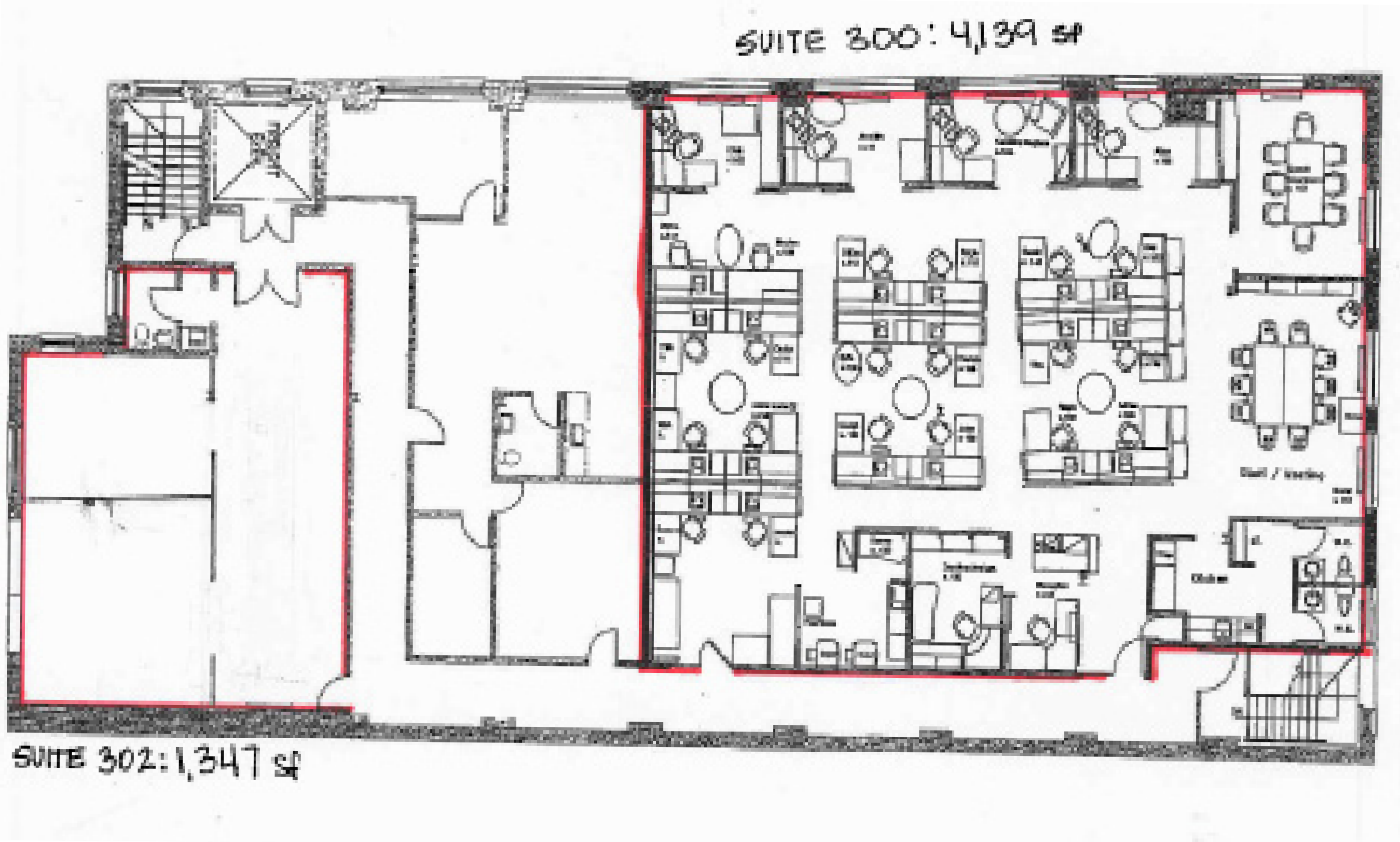
COLLIERS
INTERNATIONAL

FOR LEASE

Downtown East

KING GEORGE SQUARE

207 ADELAIDE STREET EAST • TORONTO, ONTARIO



DAVID MORETTI
416.643.3712
david.moretti@colliers.com

ASHLEY WEDLOCK
416.643.3477
ashley.wedlock@colliers.com

COLLIERS INTERNATIONAL
One Queen Street East, Suite 2200
Toronto, ON M5C 2Z2
Phone: 416.777.2200
Fax: 416.777.2277
www.colliers.com

COLLIERS
INTERNATIONAL

Information contained herein has been obtained from the owners or from other sources deemed reliable. We have no reason to doubt its accuracy but regret we cannot guarantee it. All properties subject to change or withdrawal without notice.

Our Knowledge is your Property